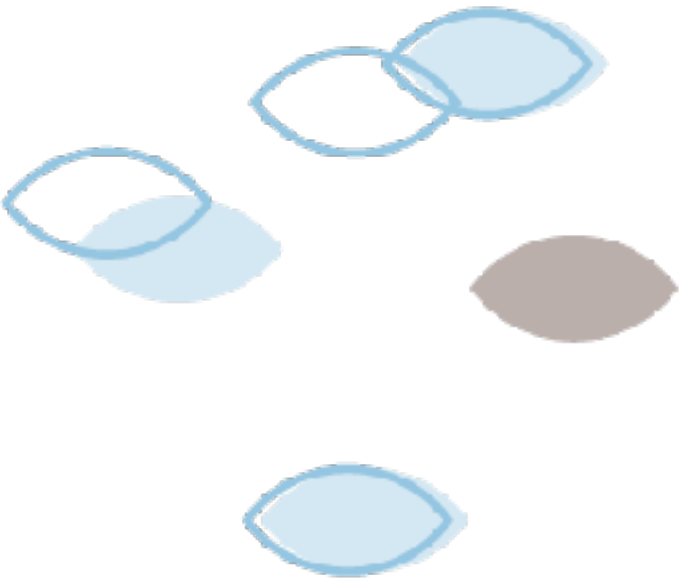


ARCHER AND  
OWL | Ends of  
the Earth  
Cloths



- Organic
- Reusable
- Machine Washable
- Gentle
- Suitable for Sensitive Skin





Archer and Owl: Ends of the Earth Cloths make a great experience even better. They are easily incorporated into Elina Organics' treatments during:

- Cleansing
- Mask removal
- Facial massages
- Controlling heat duration when applying herbal tea compresses
- Adding an extra-smooth finish by buffing at the end

- Suitable for all Skin Types
- Ecological
- Easily Sanitized | Machine Washable
- Luxurious Treatment
- Extends Spa Experience





Your clients will feel cocooned in luxury and comfort brought from the ends of the earth.